

THE GREAT SEATTLE EARTHQUAKE

Could it happen?

Presented By

Thomas P Hopp, PhD

Excerpts from a slide presentation and public lecture

© 2019 by Thomas P Hopp



WHY AM I HERE?

- 1. To share my research findings**
- 2. To discuss my dramatization of the event**
- 3. To critique some aspects of preparedness plans**
- 4. To warn people of a tsunami threat***

***Especially to stadium-goers**

Excerpts from a slide presentation and public lecture
© 2019 by Thomas P Hopp



The Seattle Fault thrusts upward from the south. Where it runs underwater, the threat of a tsunami is great. This has happened before.

DOING THE WAVE

A Very Real Threat to Stadium Crowds

Excerpts from a slide presentation and public lecture

© 2019 by Thomas P Hopp

Time = 1.0 min.
post-quake

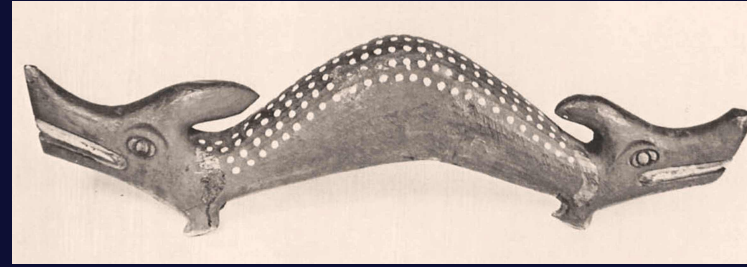


Time = 12.0 min.
post-quake



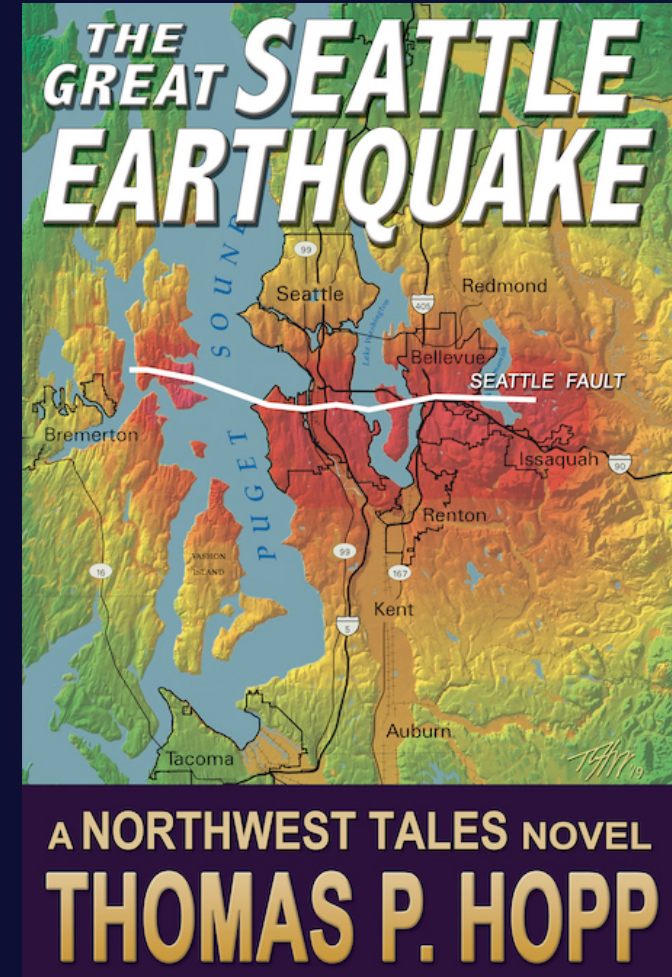


Stadiums and Highway 99 at risk for tsunami inundation



The Native Legend of A'yahos, the Earthquake and Tsunami Serpent

**For more information or to arrange
a personal appearance by Dr. Hopp,
visit the website below for contact
numbers and links**



Website: www.thomas-hopp.com

Excerpts from a slide presentation and public lecture
© 2019 by Thomas P Hopp

